

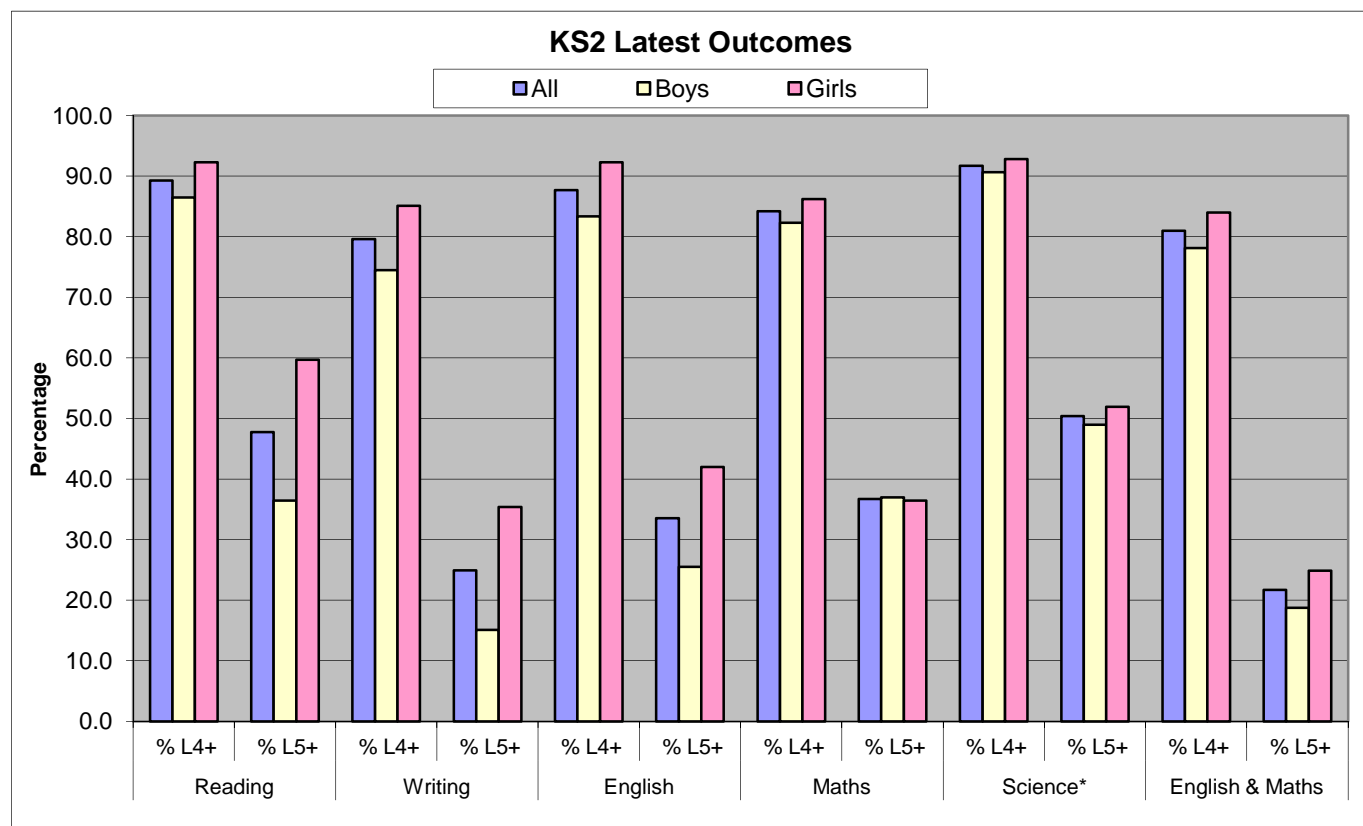
LA Rutland - Key Stage 2 - 2011

Population	Number of pupils
All	373
Boys	192
Girls	181
SEN	77
Non-SEN	296
School Action	26
School Action Plus	35
Statemented	16
White British	357
Ethnic Minority	11
Gifted & Talented Register	59
Eligible for Free School Meals	18
Language:	
English / believed to be English	371
Other / believed to be other	2
Looked After Children	0

Percentage Changes	
One pupil = a % change of:	0.3%
One boy = a % change of:	0.5%
One girl = a % change of:	0.6%

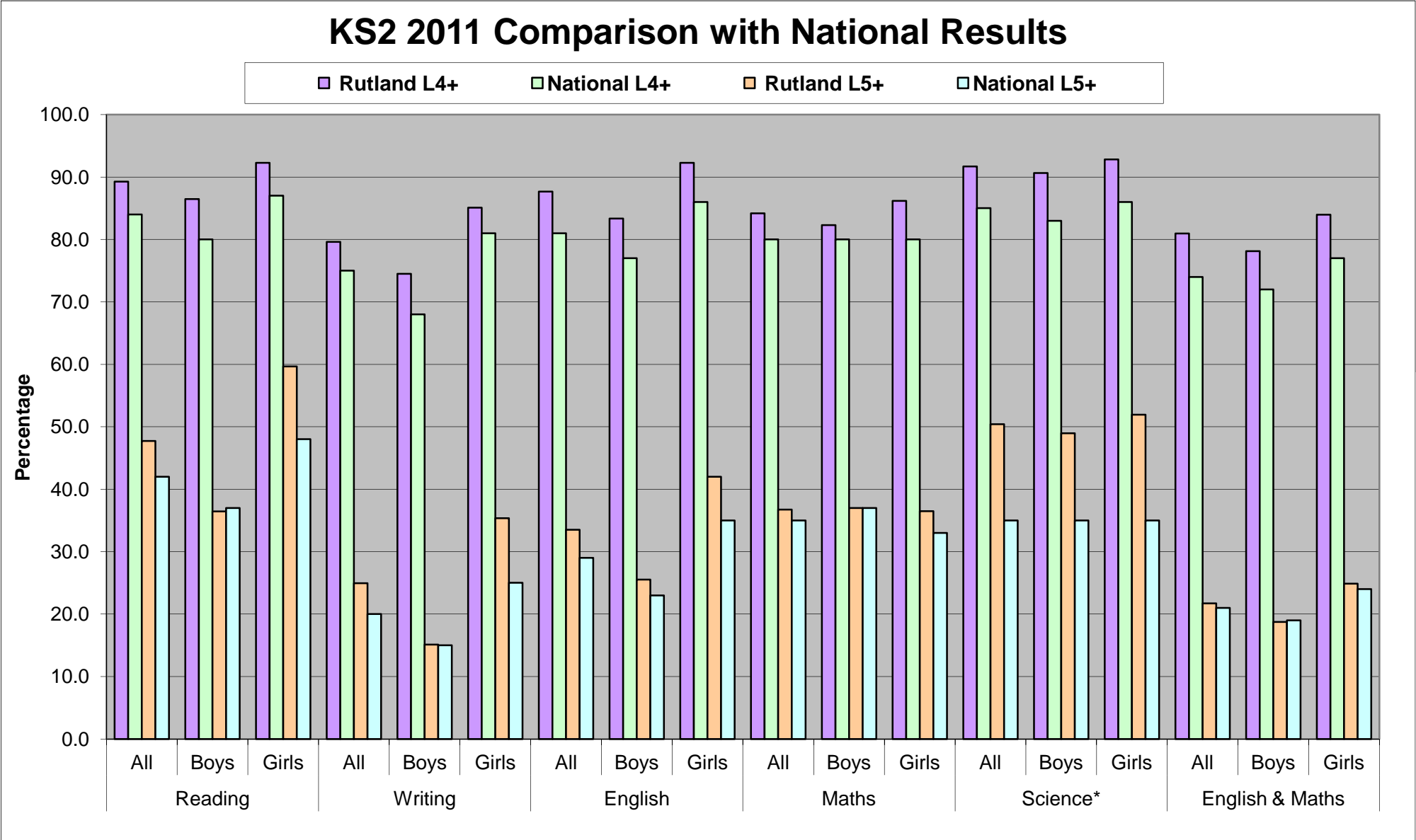
Absences	
Reading	4
Writing	2
English	4
Maths	5

Latest Outcomes	Reading		Writing		English		Maths		Science*		English & Maths	
	% L4+	% L5+	% L4+	% L5+	% L4+	% L5+	% L4+	% L5+	% L4+	% L5+	% L4+	% L5+
All	89.3	47.7	79.6	24.9	87.7	33.5	84.2	36.7	91.7	50.4	81.0	21.7
Boys	86.5	36.5	74.5	15.1	83.3	25.5	82.3	37.0	90.6	49.0	78.1	18.8
Girls	92.3	59.7	85.1	35.4	92.3	42.0	86.2	36.5	92.8	51.9	84.0	24.9



*Science results are teacher assessments

KS2 2011 Comparison with National Results

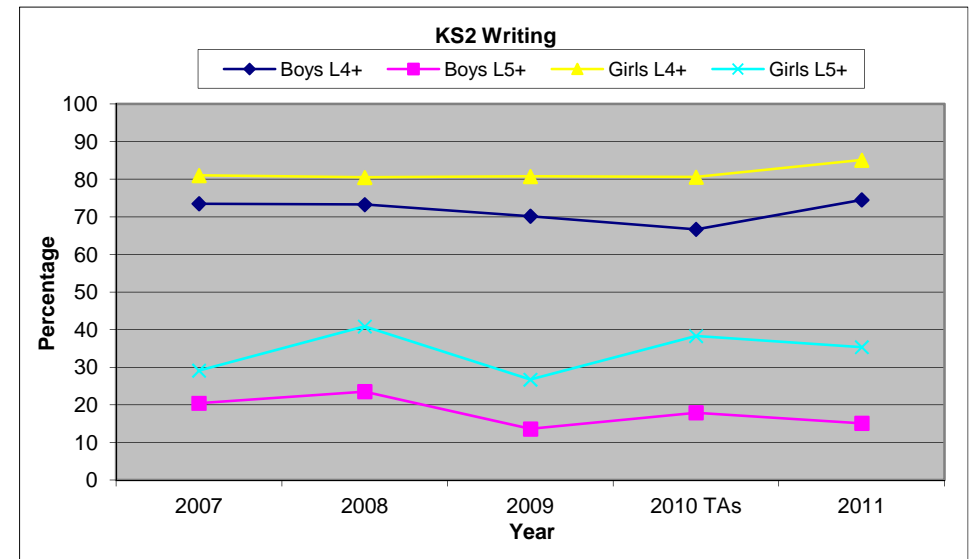
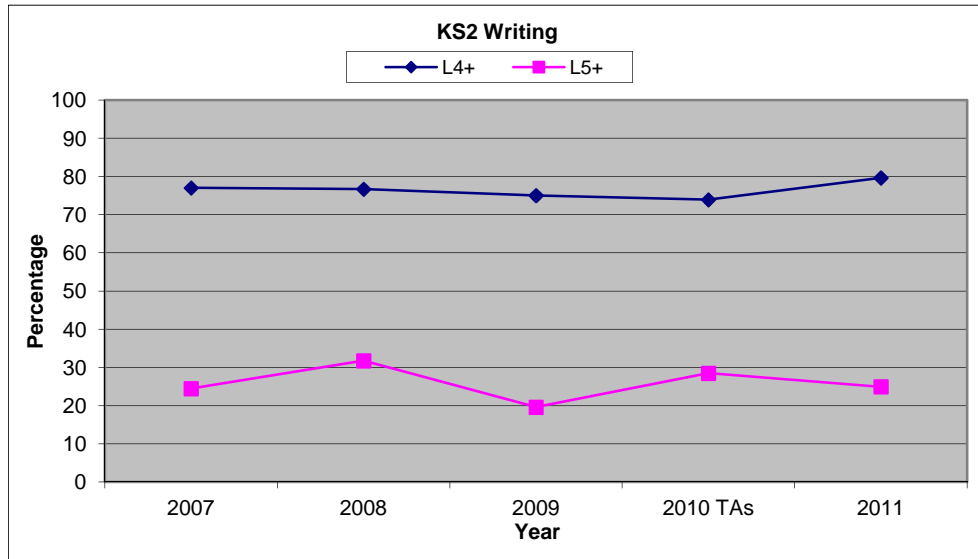
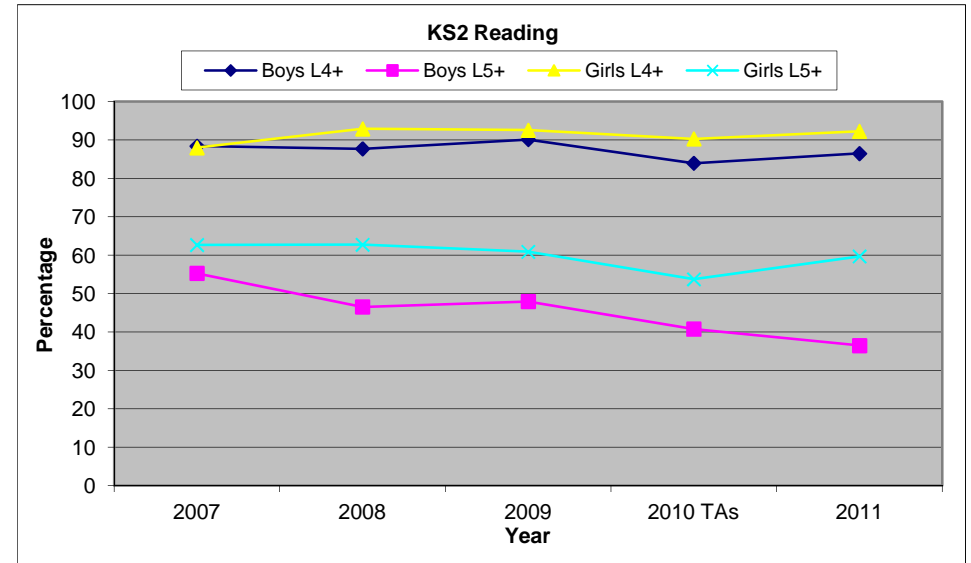
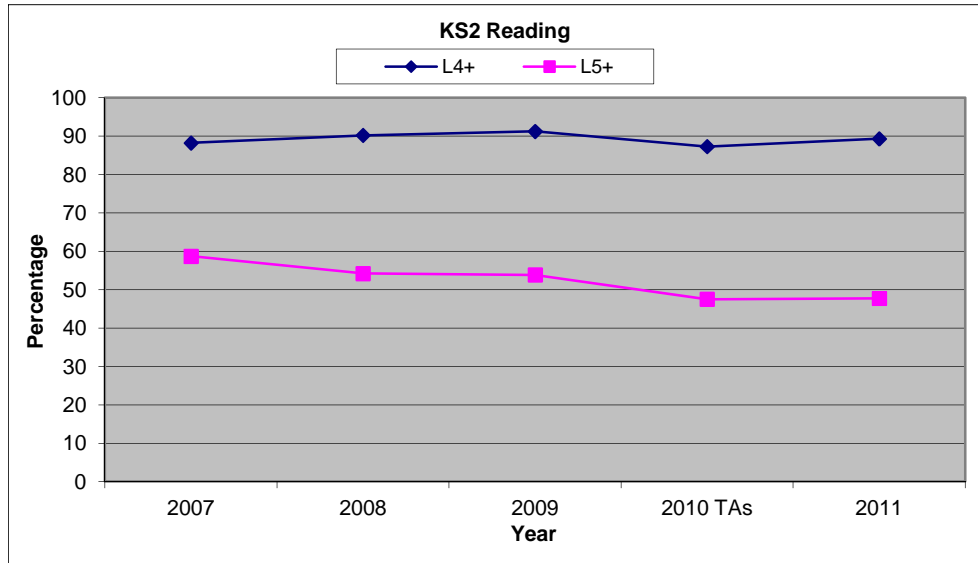


Data sourced from KEYPAS Online, last updated 28/09/2011

LA Rutland - Key Stage 2 - 2011

5 Year Trend - Key Stage 2

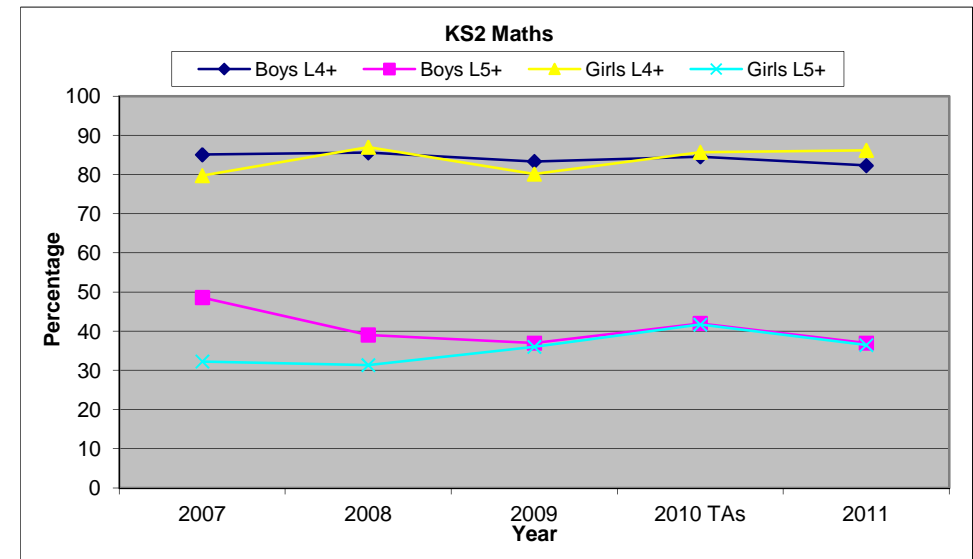
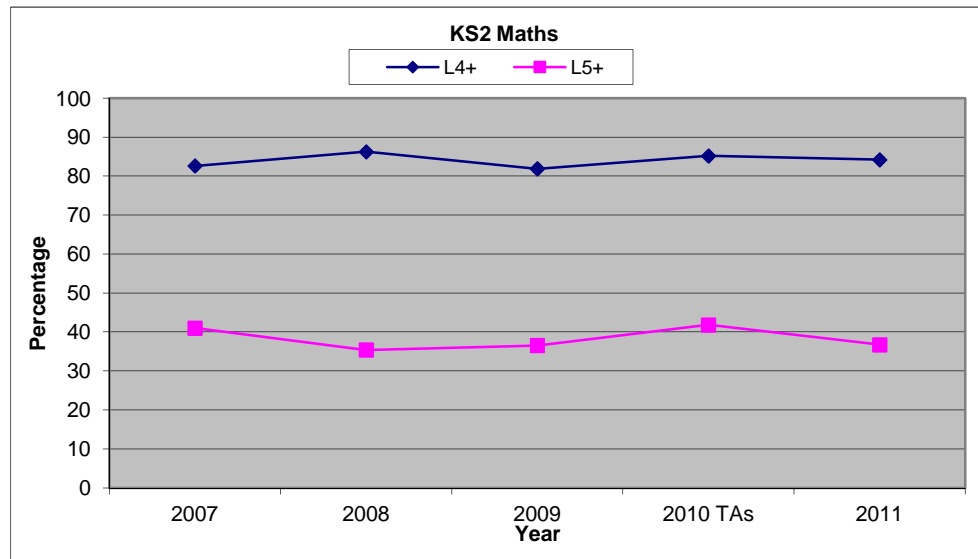
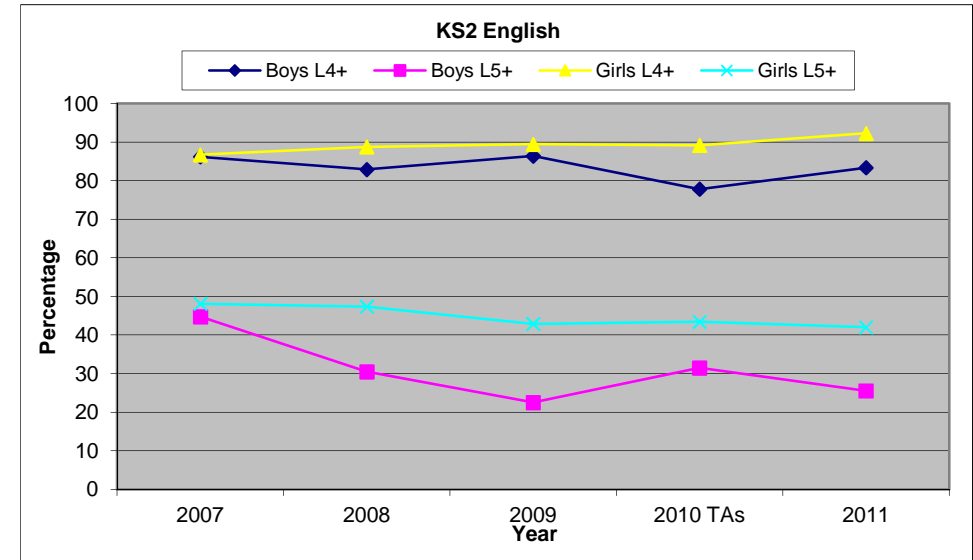
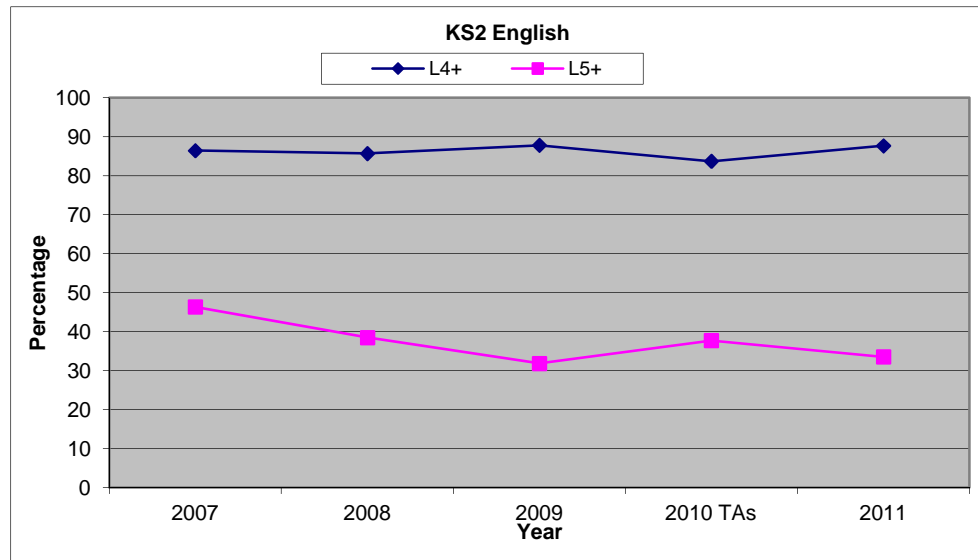
Please note: 2010 results are based on Teacher Assessments.



LA Rutland - Key Stage 2 - 2011

5 Year Trend - Key Stage 2

Please note: 2010 results are based on Teacher Assessments.



LA Rutland - Key Stage 2 - 2011

5 Year Trend - Key Stage 2

Please note: 2010 results are based on Teacher Assessments.

