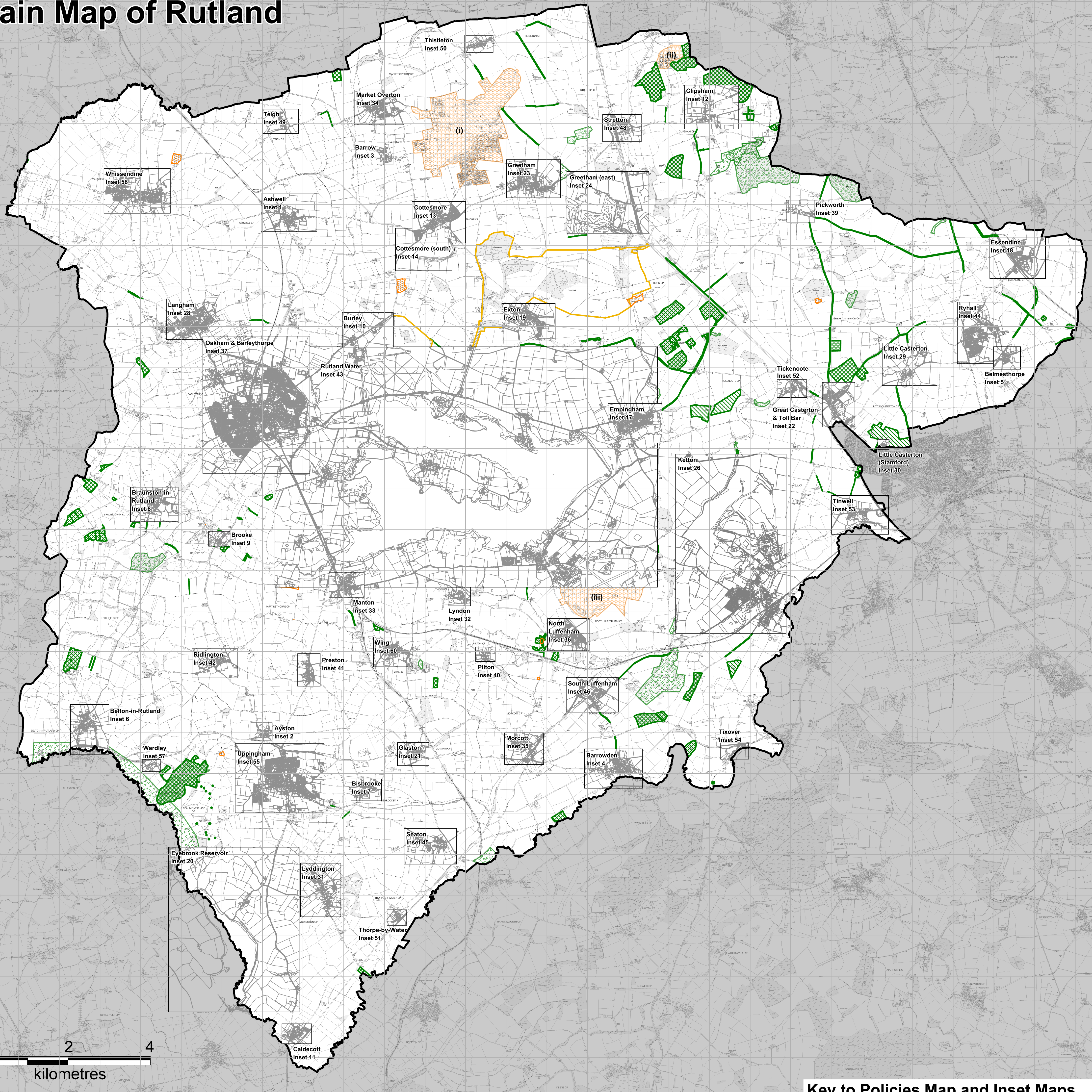


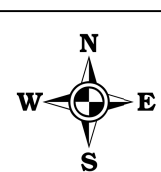
Main Map of Rutland



Key to Policies Map and Inset Maps

Policies refer to the Site Allocations & Policies DPD Proposed Submission Document and the adopted Core Strategy 2011

- County Boundary
 - Adjoining District Council Area
 - Military Bases and Prisons**
 - (i) Kendrew Barracks (Cottesmore)
 - (ii) Stocken Prison
 - (iii) St Georges Barracks (North Luffenham) (Policy SP10)
 - The Historic Environment**
 - Scheduled Monument (Policy SP19)
 - Registered Park and Garden (Policy SP19)
 - Rutland Water**
 - Rutland Water Area (Core Strategy Policy CS24)
 - Boundary to Recreation Areas
 - A = Barnack Dale
 - B = Whitwell
 - C = Sykes Lane
 - D = Normanton
 - E = Gibbet Lane (Policy SP25)
 - Biodiversity and Geodiversity Conservation**
 - Boundary to Rutland Water (SPARAMSAR) (Policy SP18)
 - Sites of National Importance for Nature Conservation
 - Site of Special Scientific Interest (SSSI) (Policy SP18)
 - Sites of Local Importance for Nature Conservation
 - Regionally Important Geological Site (RIGS) (Policy SP18)
 - Local Wildlife Site (Policy SP18)
 - Candidate Local Wildlife Site (Policy SP18)
- Information on Nature Conservation Sites is correct at the time of preparation of the plan. The latest position can be checked with the Council.*



Rutland
County Council

Site Allocations & Policies DPD
Proposed Submission Document
April 2013

Crown Copyright Licence
no. 100018056

Rutland Water Inset Map 43

