

safer communities

LEICESTERSHIRE
FIRE and RESCUE SERVICE

Integrated Risk Management Plan 2015 - 2020 Consultation

Rutland County Council 27th November 2014

safer communities

Aim & Content

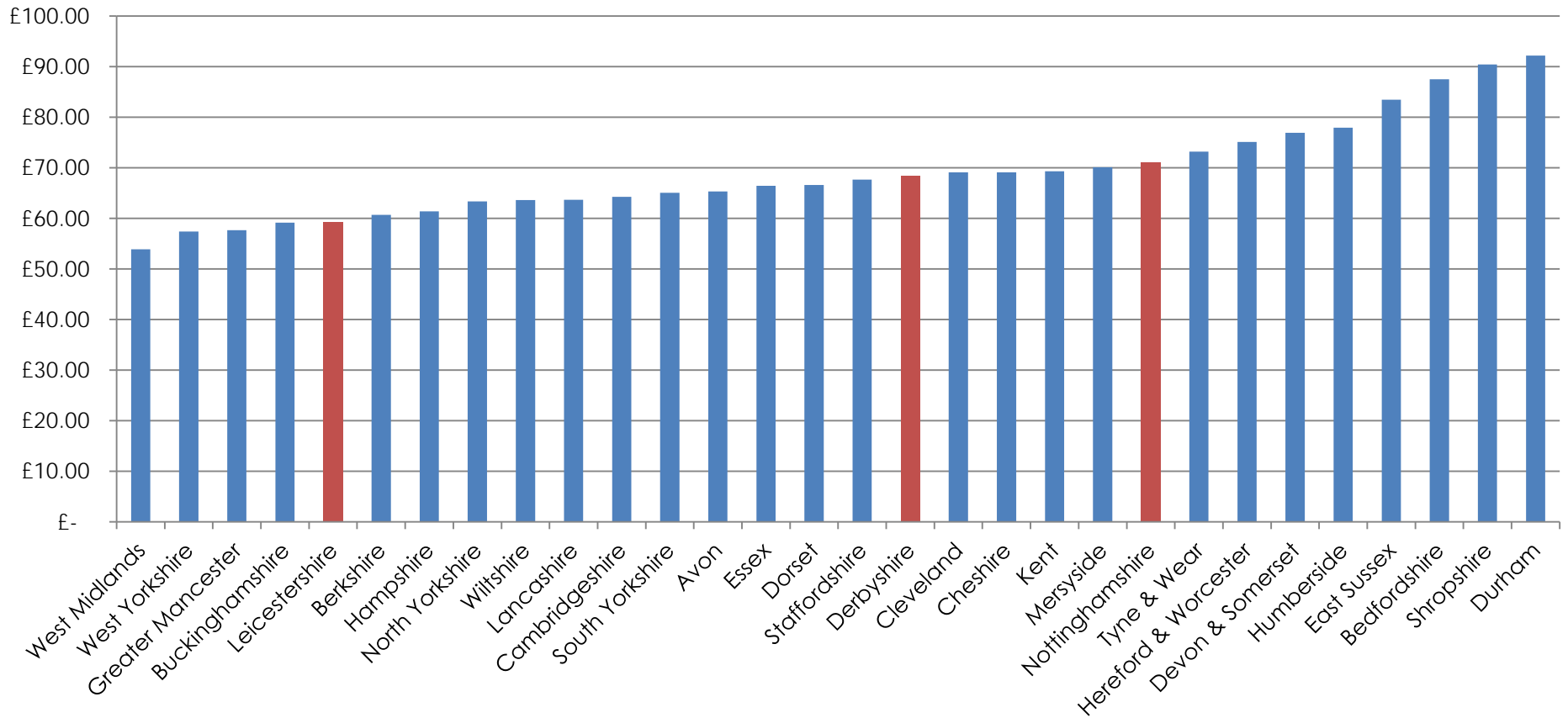
Aim: - To inform Rutland County Councilors on the Combined Fire Authority's (CFA) new Integrated Risk Management Plan (IRMP) 2015 – 2020.

Content: -

1. Drivers for change;
2. IRMP 2015 – 2020 proposals;
3. Rationale and principles of proposals;
4. Impact and consequences;
5. Consultation process/what we want to achieve;
6. Confirm how we will engage and the time period involved...

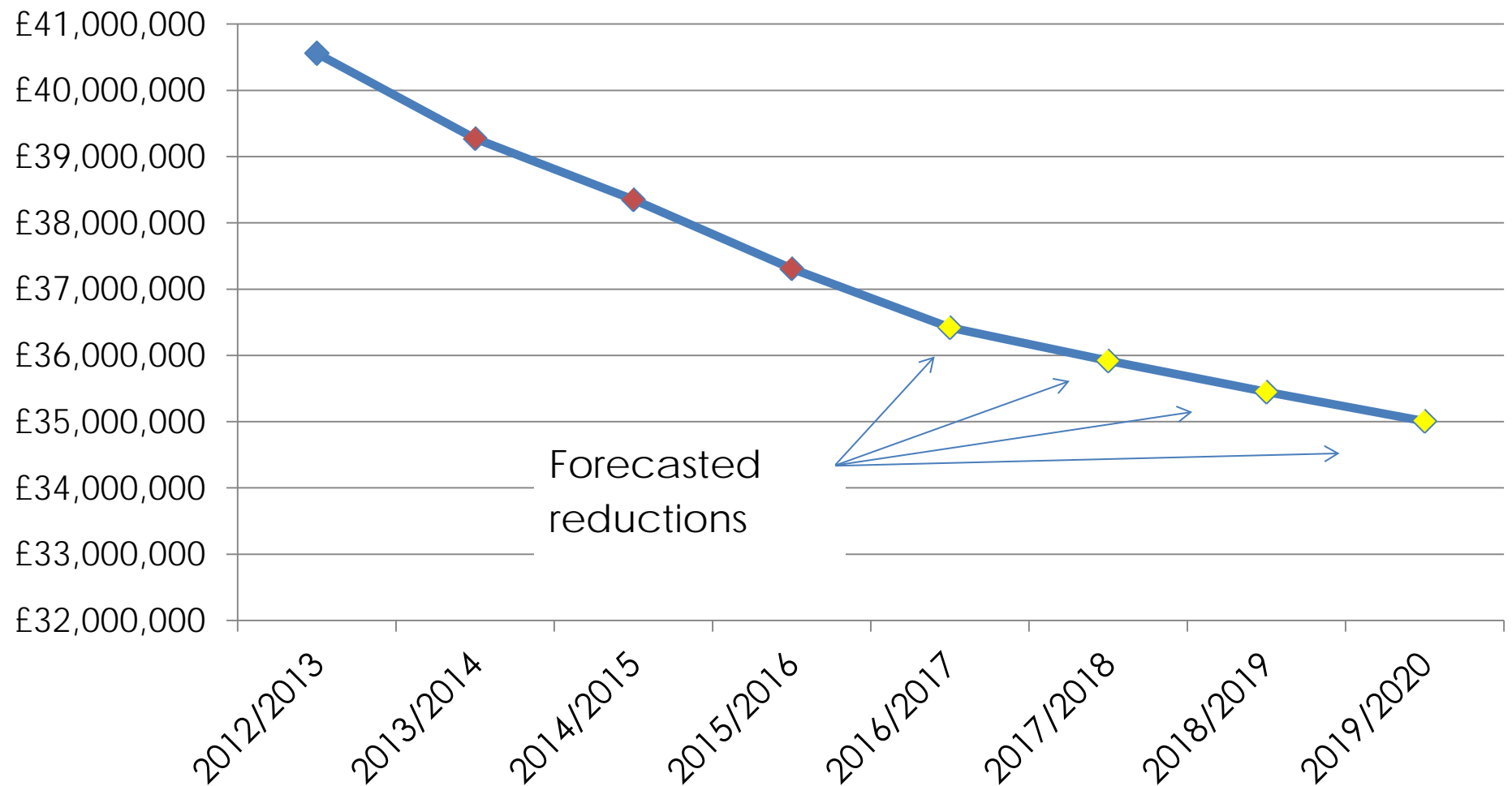
Drivers - Background

National Comparison on Band D Council Tax Levels For CFA & Metropolitan FRS



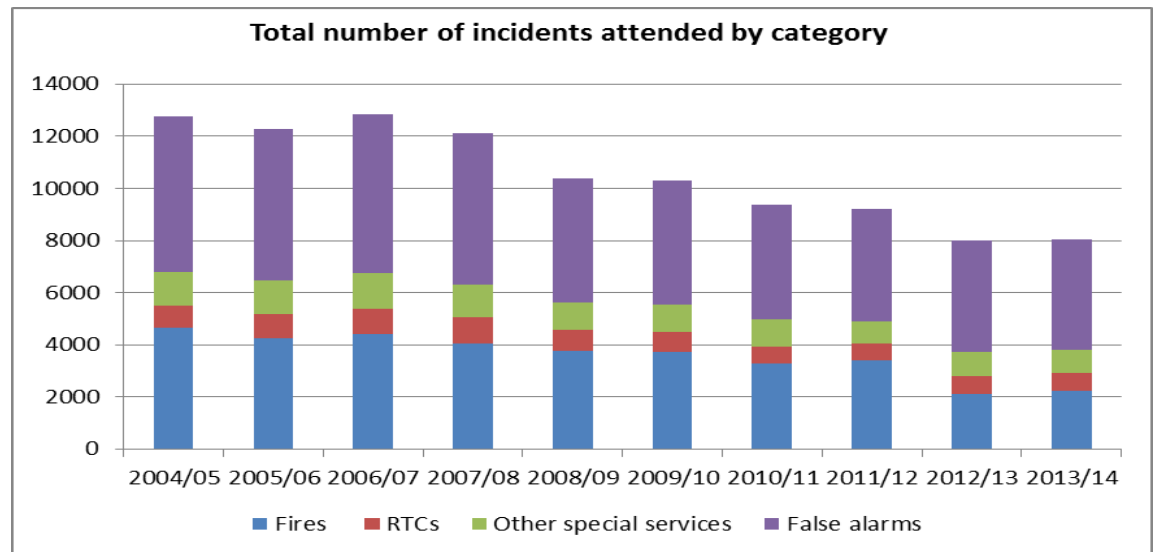
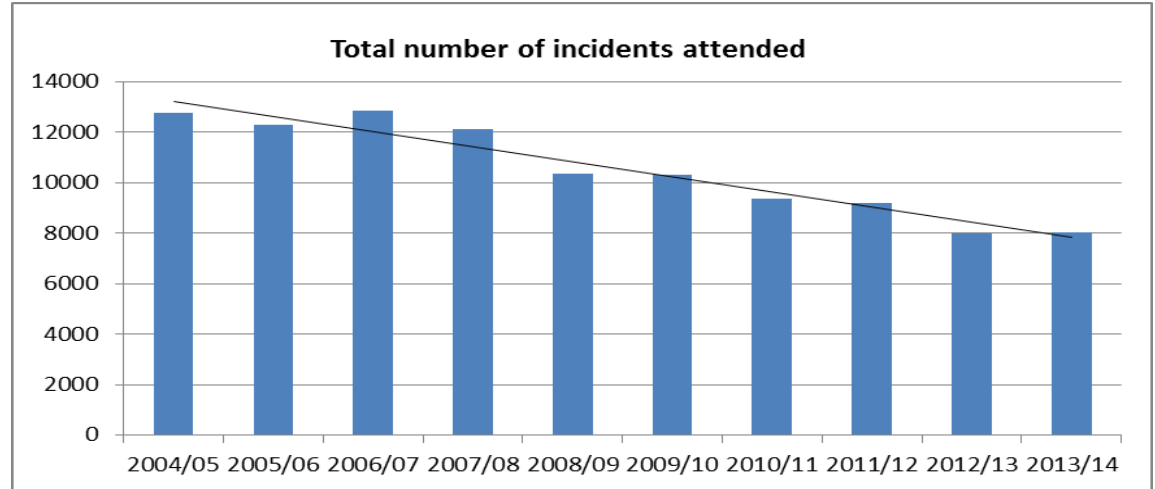
Drivers – Financial Pressures

Chart 6 Revenue Spending Power 2012/13 - 2019/20



Drivers – Reduced Demand

37% reduced demand profile over ten years



Drivers – Forecast Deficit Over 5 Years

	2014/15	2015/16	2016/17	2017/18	2018/19	2019/20	Total
Deficit	£0	£1,568,954	£1,841,641	£1,200,000	£1,200,000	£1,200,000	£7,010,595

- Approximately £2m savings over the last 2 years;
- Reinvested to improve fire and rescue provision;
- Predicted reduction in spending power as a result of government cuts (6.5% year on year);
- Plus inflationary pressures...

IRMP Proposals

1. To remove one fire engine from Loughborough Fire and Rescue Station;
2. To remove the fire engine crewed by On-Call staff from Oakham Fire and Rescue Station;
3. To remove one fire engine from the Leicester city area;
4. To crew all fire engines with a minimum of four people as standard;
5. To disestablish the resilience team whose role includes supporting "On Call" fire and rescue stations;
6. To change the duty system at Wigston Fire and Rescue Station from a wholetime 2/2/4 and On-Call system to a wholetime Day Crewing Plus and On-Call system;
7. To ask members of the public if they would be prepared to pay more for their fire and rescue service...

Rational & Principles of IRMP Proposals

- Supported by the outputs of the new LFRS Community Risk Model and response time analysis;
- Externally validated to determine suitability and overall fitness for purpose;
- LFRS Community Risk Model applied at District level;
- IRMP District profiles;
- Proposals represent the best way of utilising resources;
- In addition, these changes, if approved, should enable the CFA to agree a balanced budget during the short to medium term...

Impact of IRMP Proposals

Table Based Upon 1.5% Council Tax Levels

	2014/15	2015/16	2016/17	2017/18	2018/19	2019/20	Total
Deficit	£0	£1,568,954	£1,841,641	£1,200,000	£1,200,000	£1,200,000	£7,010,595
Savings	£247,780	£1,115,103	£2,206,874	£894,290	£779,040	£0	£5,243,087
Deficit With Savings	£247,780	-£453,851	£365,233	-£305,710	-£420,960	-£1,200,000	-£1,767,508
WT Establishment Reduction	0	8	56	20	20	0	104
RDS Establishment Reduction	0	0	12	0	0	0	12

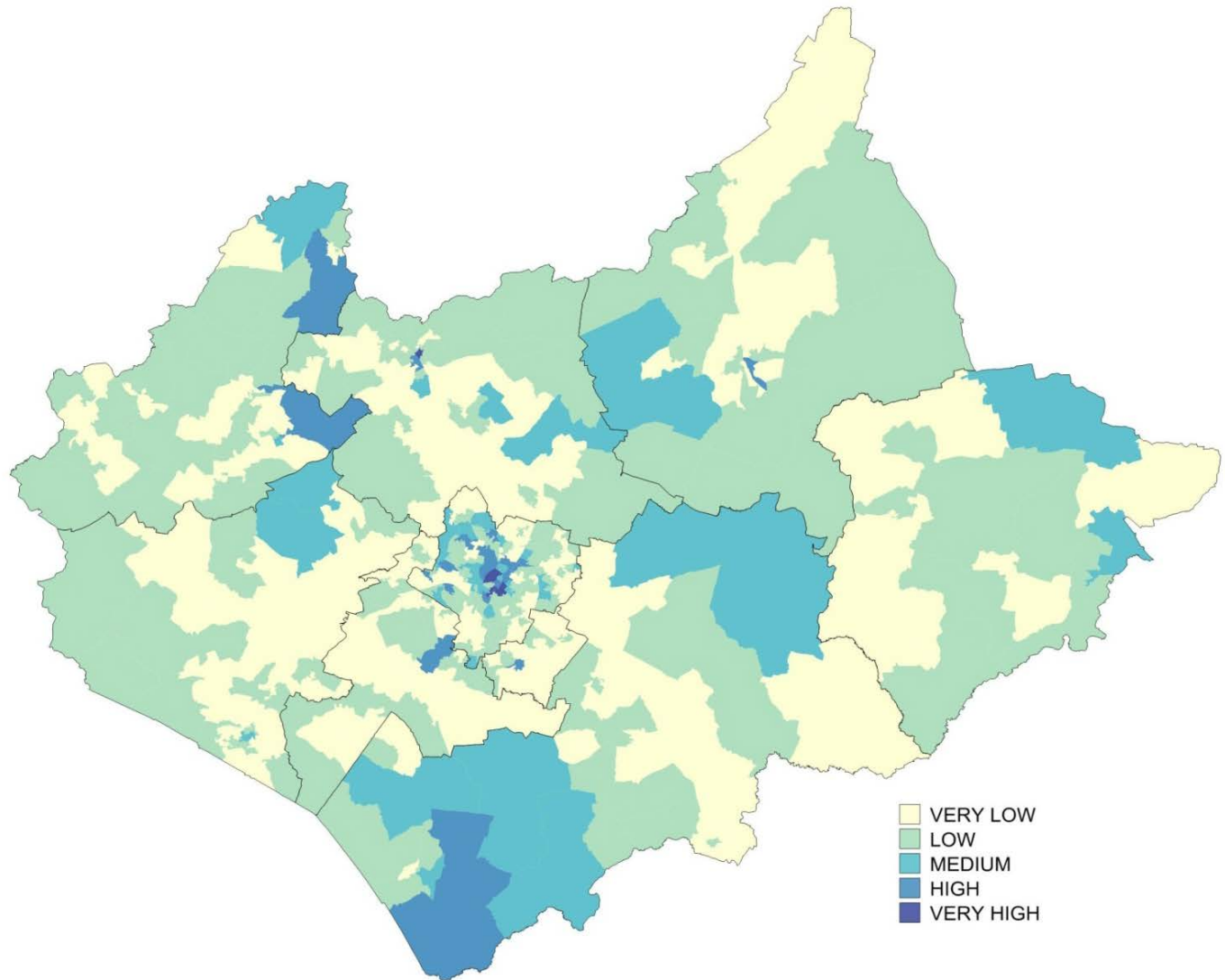
RDS: Retained Duty System. WT: Wholetime

- Maintain 20 fire and rescue stations;
- Reduce fire engines from 30 to 27.

Principles of Consultation

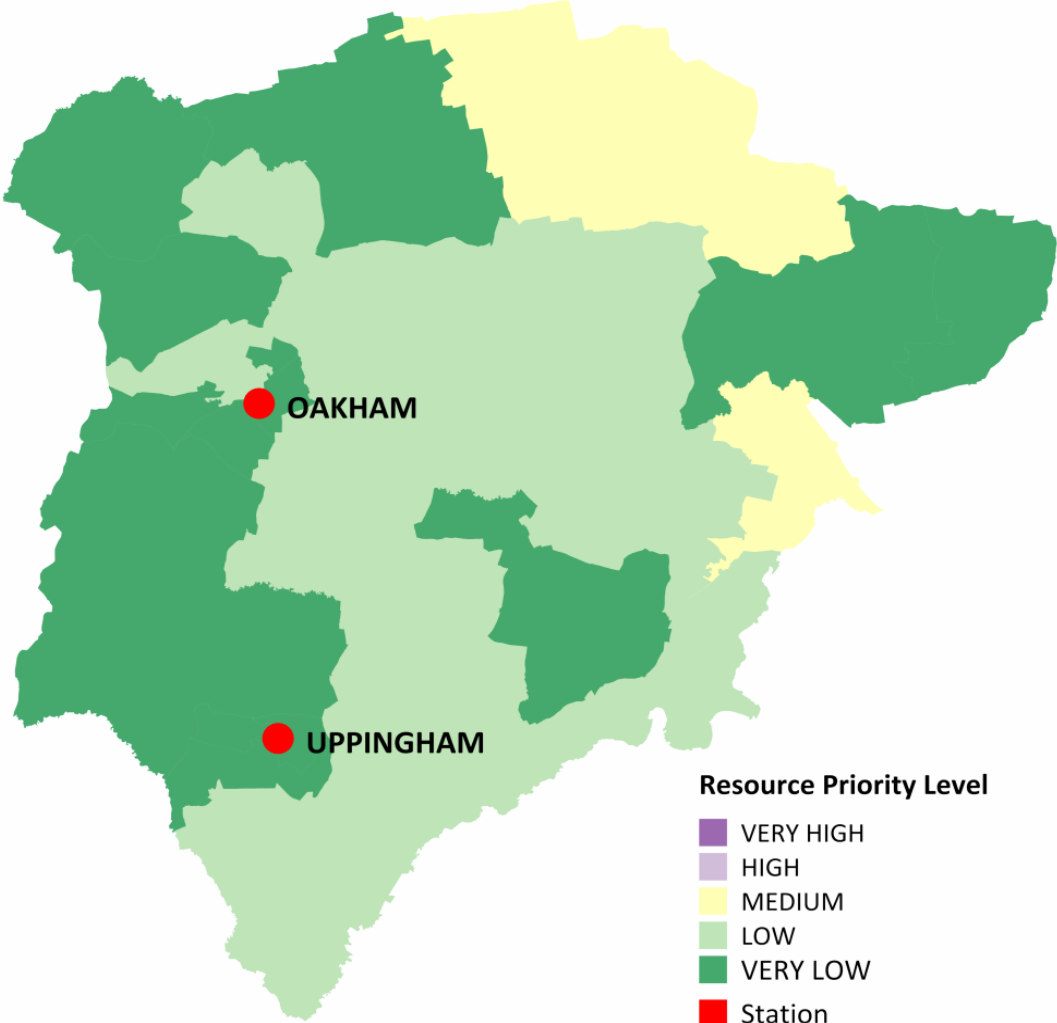
- Governing principle is proportionality of type/scale of consultation to the potential impacts;
- Looking for quality as opposed to quantity;
- Follow the Gunning Principles:
 - *formative stage;*
 - *sufficient information;*
 - *enough time;*
 - *take into account...*
- We want to garner views to understand possible unintended consequences and get views on implementation;
- Not a referendum – managing expectations...

Authority Risk Profile



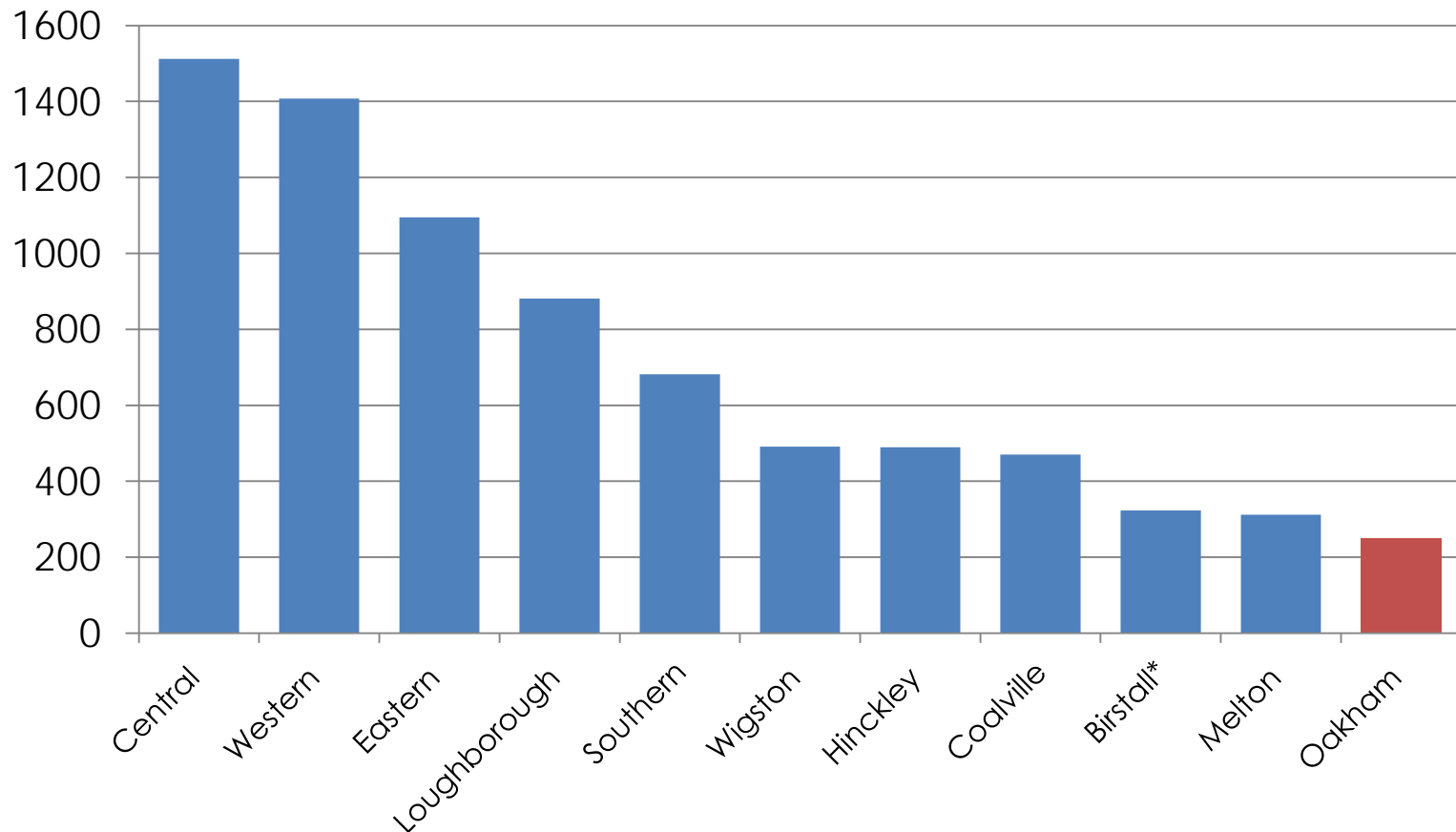
Rutland Risk Profile

● MELTON

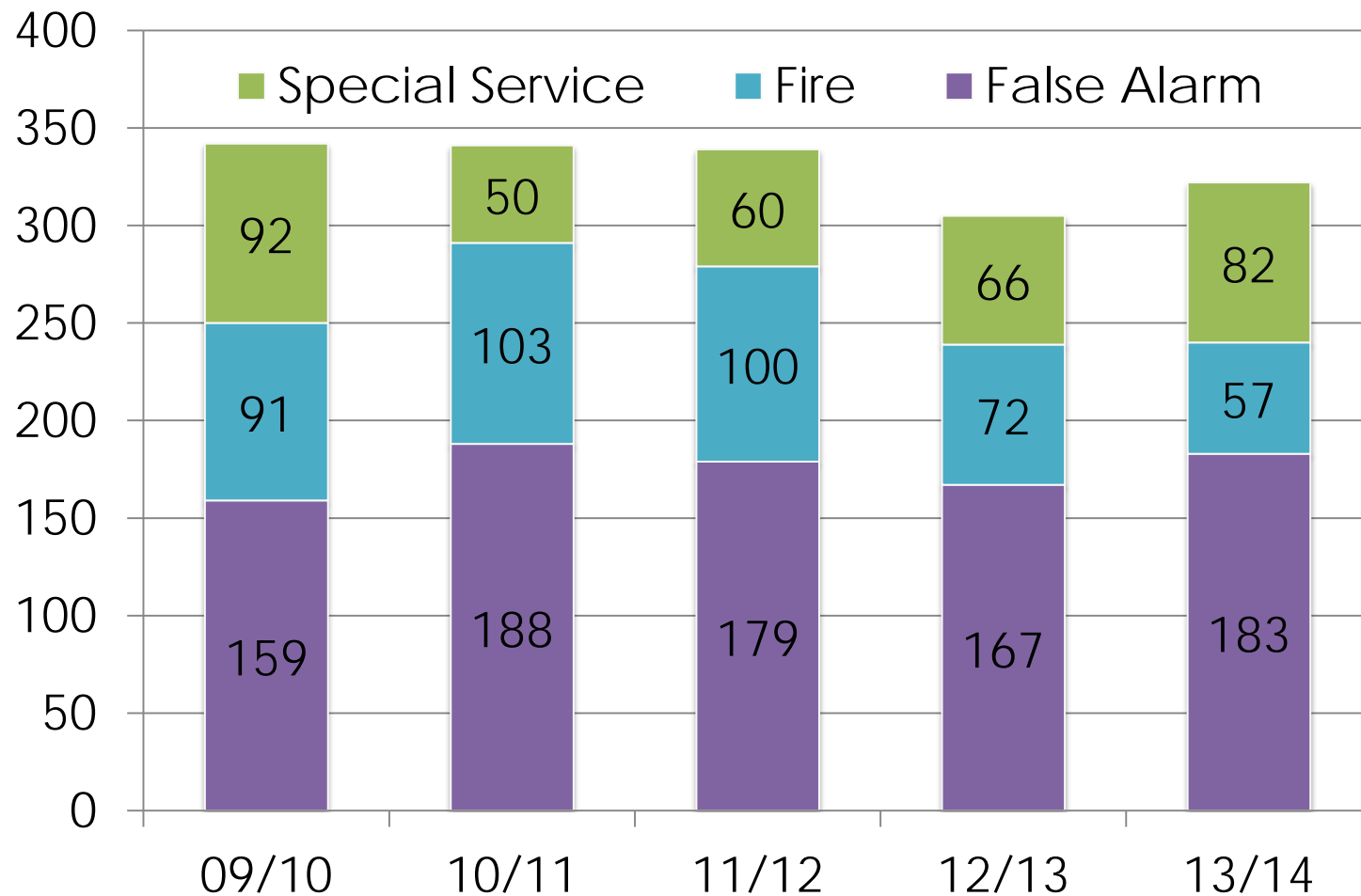


Authority Wide Comparison of Incidents Attended

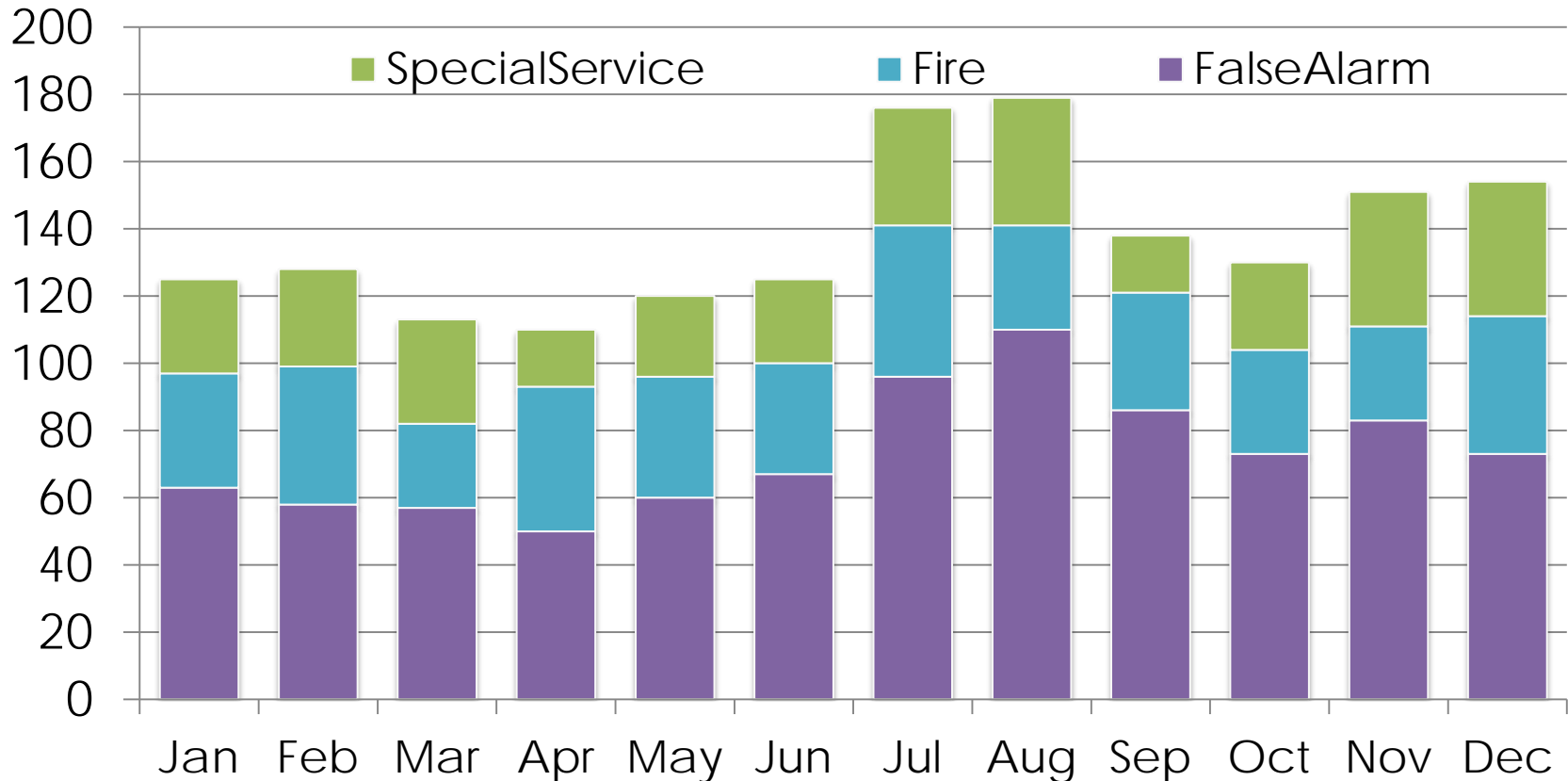
Five year average number of incidents by
Wholetime Station Area (Apr 09-Mar14)



Rutland Annual Number of Incidents Attended by Year & Type



Rutland Monthly Number of Incidents Attended by Month & Type



Data Source: IRS, Leicestershire Fire & Rescue Service

*Casualties due to primary fires and fire related injuries

**Casualties due to primary fires and fire related injuries. Excludes casualties advised to have a precautionary check or receiving first aid only

safer communities

Rutland Annual Number of Incidents Attended

Measure	09/10	10/11	11/12	12/13	13/14	Total	% Change
No. of primary fire incidents	35	54	54	35	40	218	14%
No. of secondary fire incidents	56	49	46	37	17	205	-70%
No. of road traffic collision incidents	53	30	37	40	45	205	-15%
No. of other special service incidents	39	20	23	26	37	145	-5%
No. of automatic fire alarms	132	153	151	125	139	700	5%
No. of other false alarm incidents	27	35	28	42	44	176	63%
No. of fire fatal casualties*	0	1	0	0	0	1	--
No. of fire non-fatal casualties**	1	1	1	0	0	3	--

Data Source: IRS, Leicestershire Fire & Rescue Service

*Casualties due to primary fires and fire related injuries

**Casualties due to primary fires and fire related injuries. Excludes casualties advised to have a precautionary check or receiving first aid only

safer communities

Rutland Monthly Number of Incidents Attended

Measure	09/10	10/11	11/12	12/13	13/14	Av
No. of primary fire incidents	3	5	5	3	3	4
No. of secondary fire incidents	5	4	4	3	1	3
No. of road traffic collision incidents	4	3	3	3	4	3
No. of other special service incidents	3	2	2	2	3	2
No. of automatic fire alarms	11	13	13	10	12	12
No. of other false alarm incidents	2	3	2	4	4	3

Data Source: IRS, Leicestershire Fire & Rescue Service

*Casualties due to primary fires and fire related injuries

**Casualties due to primary fires and fire related injuries. Excludes casualties advised to have a precautionary check or receiving first aid only

safer communities

Rutland Performance – Attendance Standards Over the Last 3 Years

- 81.9% of life risk incidents were attended within 10 minutes in the last 3 years;
- In addition, a much higher percentage of 98.6% of non life risk incidents were attended within 20 minutes...

Rutland Risk Profile

- Rutland represents the lowest overall risk of all of our community areas;
- Least deprived;
- Call rates are lower;
- Number of people affected lower;
- The number of people realising injuries is lower;
- Rutland is comparatively the safest place to live and work and our plans adjust operational provisions to be far more reflective of this fact...

safer communities